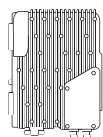




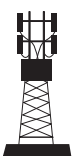
RS485

RS485高可靠性、小体积防护方案

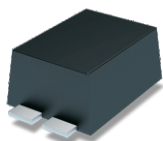
High reliability and small size protecting solutions of RS485



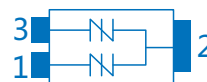
RRU



LPZ0_B-1



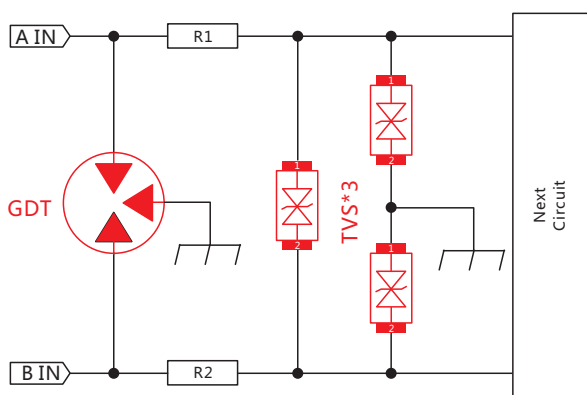
BS0060U-2G



$I_{pp} \geq 3KA @ 8/20\mu s$
SMC-T Package $V_{BR} \geq 6V$

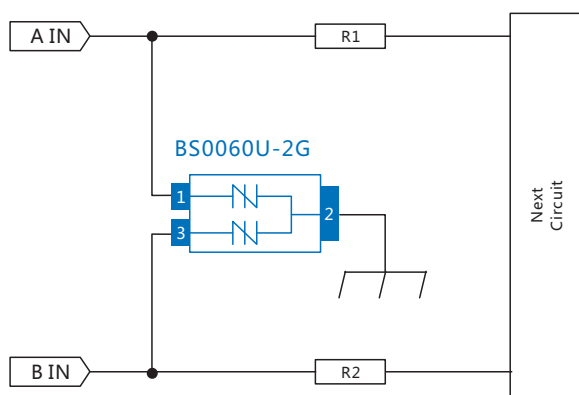
行业传统方案

Industrial traditional solutions



槟城创新方案

Bencent's innovative solutions



Off state Voltage		Switching Voltage		On state Voltage		Holding Current I_H (mA)	Capacitance C_o (pF) 2V@1MHz Max	Surge Waveform (μs)	Surge Peak (KV)	Package	Size L*W*H (mm)	Mark
V_{DRM} (V)	I_D (μA) Max	V_s (V) Max	I_s (mA)	V_r (V) Max	I_r (A)							
6 (Pin1,3-2)	5	25 (Pin1,3-2)	800	4	2.2	≥ 50	500	8/20	3(KA)	SMC-T	8.0×5.9×2.0	B006U2G



深圳市槟城电子有限公司
Shenzhen Bencent Electronics Co.,Ltd.
+86-755-26515027/26515060-808
www.bencent.com.cn